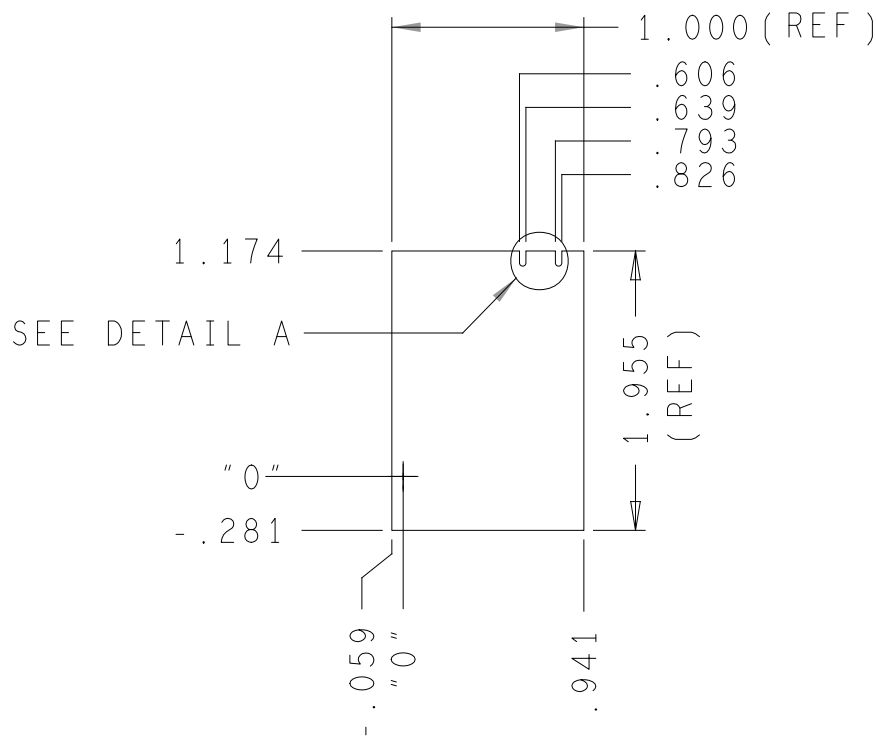
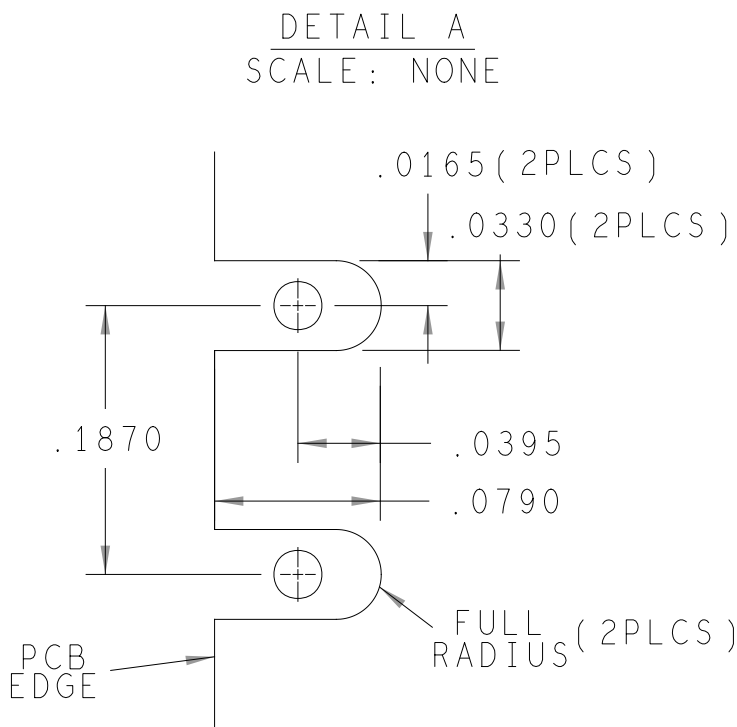


REVISIONS			
REV	DESCRIPTION	DATE	APPROVED
A	INITIAL RELEASE	11SEPT20	T. CABILDO
B	CHANGES AS PER ECR-100231	22DEC20	T. CABILDO
C	CHANGES AS PER ECR-103776	29SEP21	Z. ARCEO
D	CHANGES AS PER ECR-105390	05NOV21	Z. ARCEO
D1	CHANGES AS PER ECR-109540	19JUL22	Z. ARCEO
E	CHANGES AS PER ECR-110097	24AUG22	Z. ARCEO



BOARD DIMENSIONS



HOLE TOLERANCE

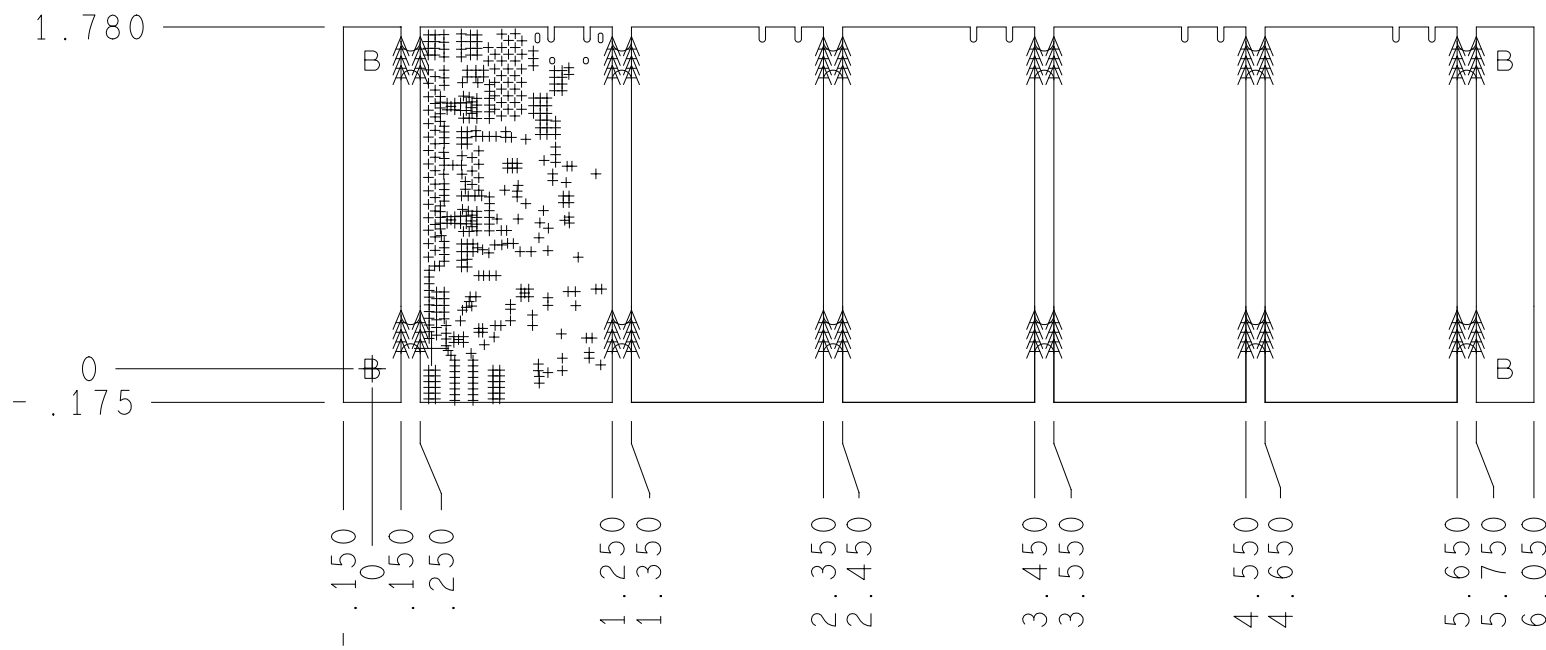
UNLESS SPECIFIED

PLATED: +/- 3 MILS

NON-PLATED: +/- 2 MILS


DRILL CHART: TOP to BOTTOM				
ALL UNITS ARE IN MILS				
FIGURE	SIZE	PLATED	QTY	TOLERANCE/NOTES
+	10.0	PLATED	422	DIA MAX/SEE NOTE 14
A	25.0	NON-PLATED	96	
B	125.0	NON-PLATED	4	
°	34.0x26.0	PLATED	2	
°	51.0x24.0	PLATED	2	

ARRAY DRAWING

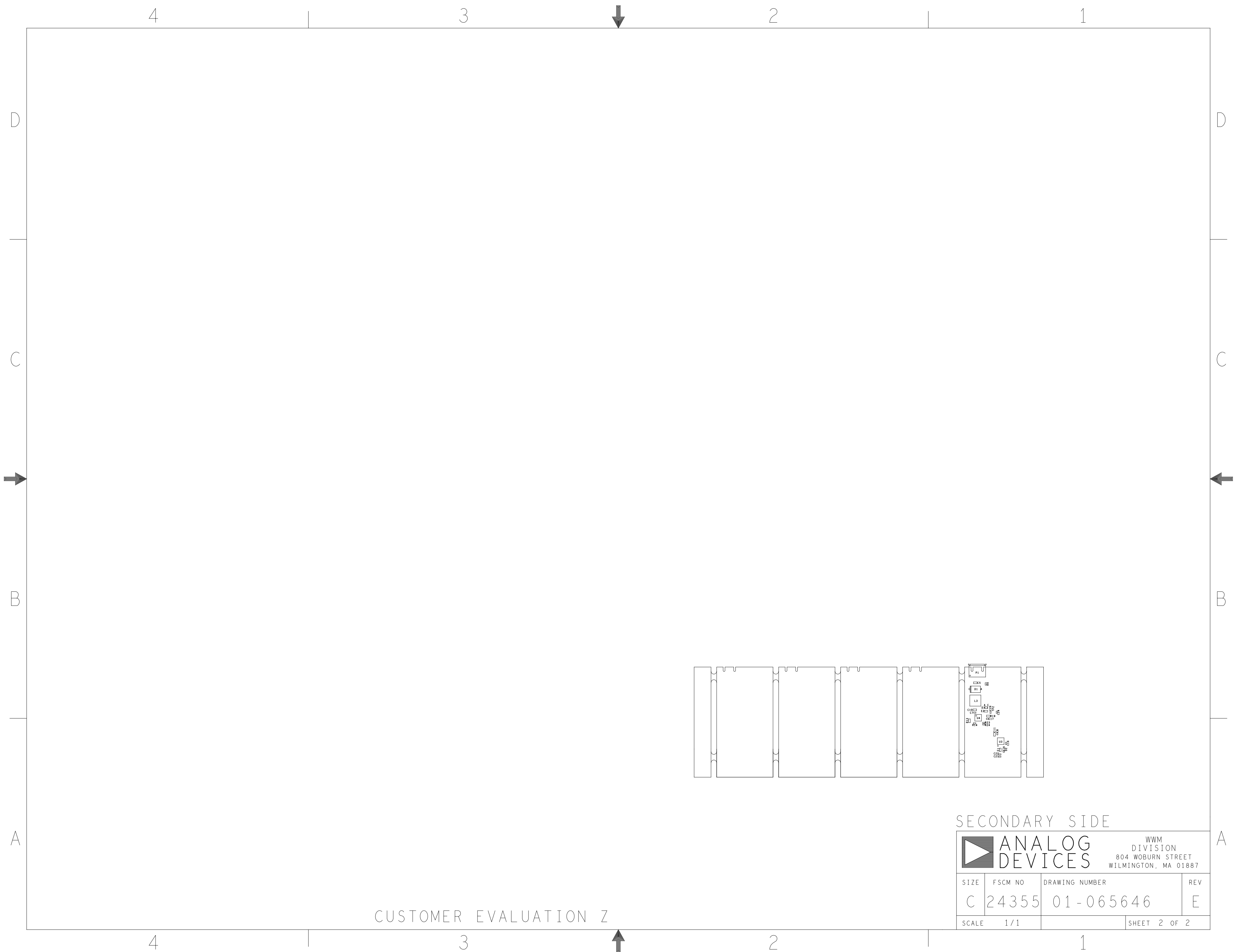


CUSTOMER EVALUATION Z

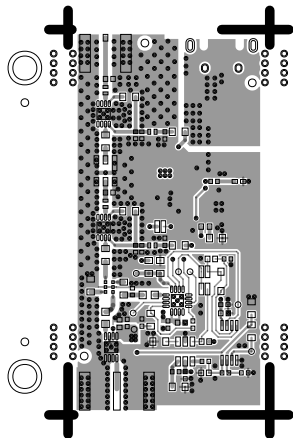
PRIMARY SIDE

UNLESS OTHERWISE SPECIFIED DIMENSIONS ARE IN INCHES			APPROVAL		DATE		<div><div></div><div><div>ANALOG DEVICES</div></div></div> <div>WWM DIVISION 804 WOBURN STREET WILMINGTON, MA 01887</div>									
TOLERANCES			TEMPLATE ENGINEER N/A													
DECIMALS	FRACTIONS	ANGLES	HARDWARE SERVICES M VALE		11SEP20		TITLE FABRICATION EVAL - CN0555 - EBZ CUSTOMER EVALUATION Z									
.XX . . .010	. . .1/32	. . . 2	HARDWARE SYSTEMS N/A													
MATERIAL			TEST ENGINEER N/A													
			COMPONENT ENGINEER A. GIRON		26AUG22											
			TEST PROCESS N/A													
			HARDWARE RELEASE K. JABATAN		11SEP20		SIZE C				FSCM NO 24355		DRAWING NUMBER 09 - 065646		REV E	
FINISH			DESIGNER M. NICOPIOR		11SEP20											
			PTD ENGINEER T. CABILDO		11SEP20											
			CHECKER N/A													
DO NOT SCALE DWG																

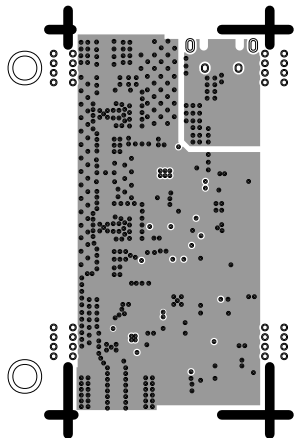




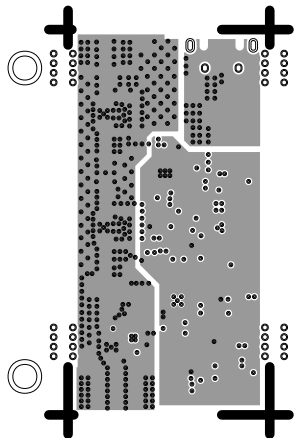
L1 PRIMARY
08-065646-01
REV E



L2 GND
08-065646-07
REV E



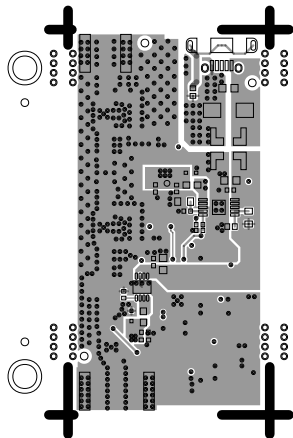
L3 PWR
08-065646-08
REV E



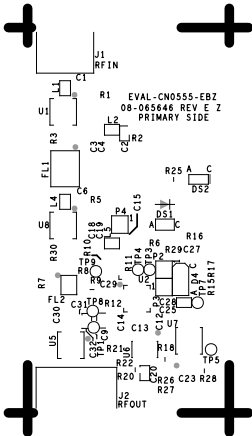
L4 SECONDARY

08-065646-02

REV E



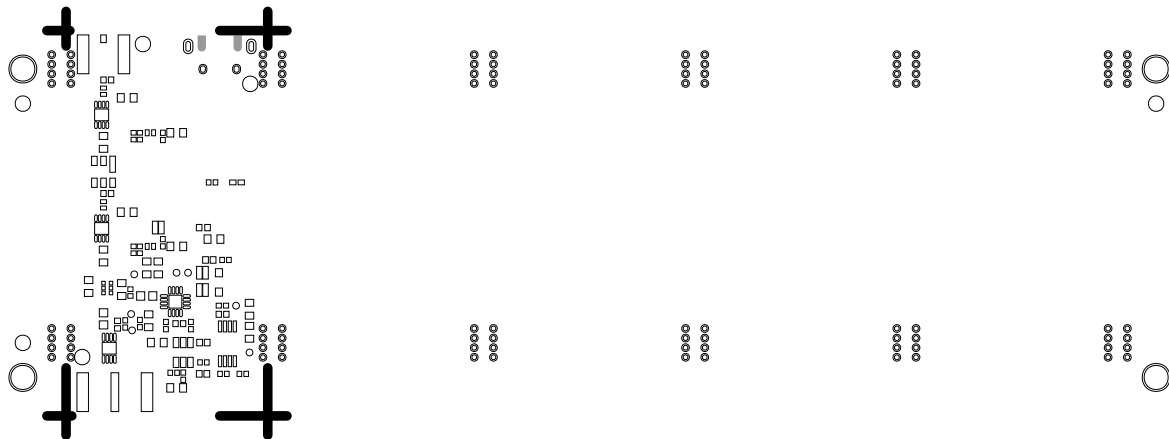
J1
 RFIN
 C1
 U1
 R1
 L1
 R3
 FL1
 C6
 L4
 U8
 R30
 R7
 FL2
 C30
 U5
 C31
 TP8
 R12
 C14
 C13
 R21
 U6
 R22
 R20
 J2
 RFOUT
 R2
 L2
 C3
 C32
 R25
 A
 C
 D52
 D51
 A
 C
 R16
 R29
 C27
 R6
 P2
 TP3
 U2
 TP4
 R11
 TP5
 R15
 R17
 C28
 C25
 U7
 R18
 C23
 R28
 R27



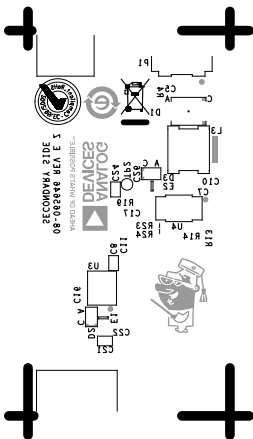
SOLDERMASK PRIMARY

08-065646-04

REV E



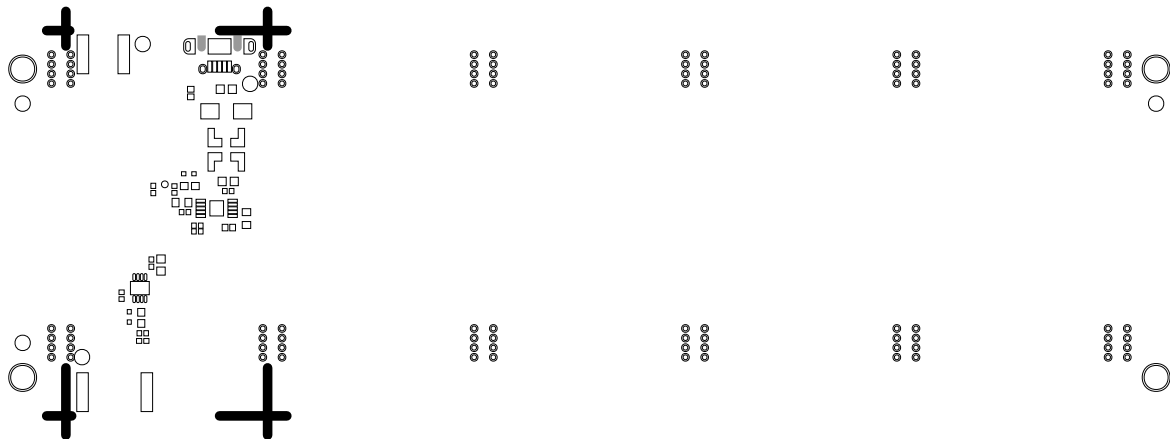
REV E



SOLDERMASK SECONDARY

08-065646-06

REV E



PASTEMASK PRIMARY

08-065646-09

REV E



PASTEMASK SECONDARY

08-065646-10

REV E

